



Omega

Omega Completion Technology Ltd.

ELECTRONIC LINER SHOE (ELS)

The Omega Electronic Liner Shoe (ELS) is a well pressure control device that is designed to be installed below Command Activated Sand Face Valves in the horizontal section of a well.

It is deployed as part of the liner in the open position so that it can auto fill the liner and allow for pumping operations to be performed.

The ELS may be programmed to close upon the expiry of a pre-determined time delay, or alternatively by using pressure recognition technology. In addition a combination of both the above methods may also be utilised.

Two robust independent sets of electronic circuits and two independent operating mechanisms provides 100% redundancy.

Once closed the valve is mechanically locked in the closed position, creating a pressure barrier between the liner and the reservoir. This will allow for multiple pressure tests to be carried out to test the completion, set the packer and also initiate the Command Activated Sand Face Valves.

The Omega Electronic Liner Shoe uses the same field proven technology currently used in products such as the Clean Out Valve, Tracer Deployment Valve and Self-Opening Sandface Valve. These products have all been developed from our original Addressable Completion Accessory Tool (ACAT) technology.

FEATURES

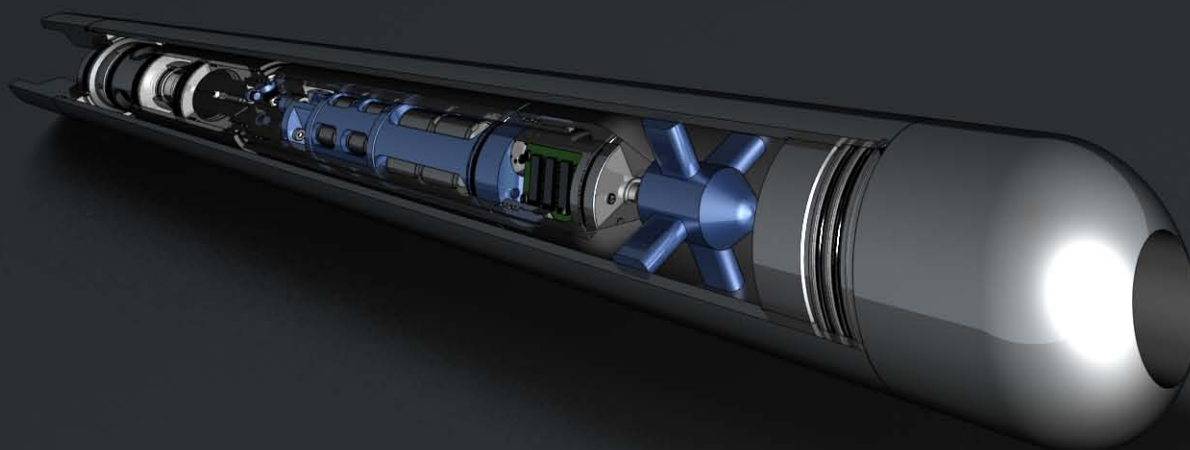
- Field Proven Electronics.
- Delayed closing for up to 120 days.
- Field proven & reliable technology.
- HPHT compatible (165 deg C).
- Two independent electronic circuits.
- Two Independent operating mechanisms.
- Protected sealing surfaces prior to activation.

APPLICATIONS

- Remote barrier in Horizontal Wells.
- Provides ability to pump through liner during deployment.
- Holds pressure from above and below once activated.
- Allows upper completion packers to be set without the need for intervention.
- Allows pressure testing of upper completion.

BENEFITS

- Large Flow Area.
- Auto fills the liner during deployment.
- Allows the liner to be pumped through.
- Eliminates the need for an inner work string.
- No Intervention/Manipulation required.



REV 009 : 17/02/11

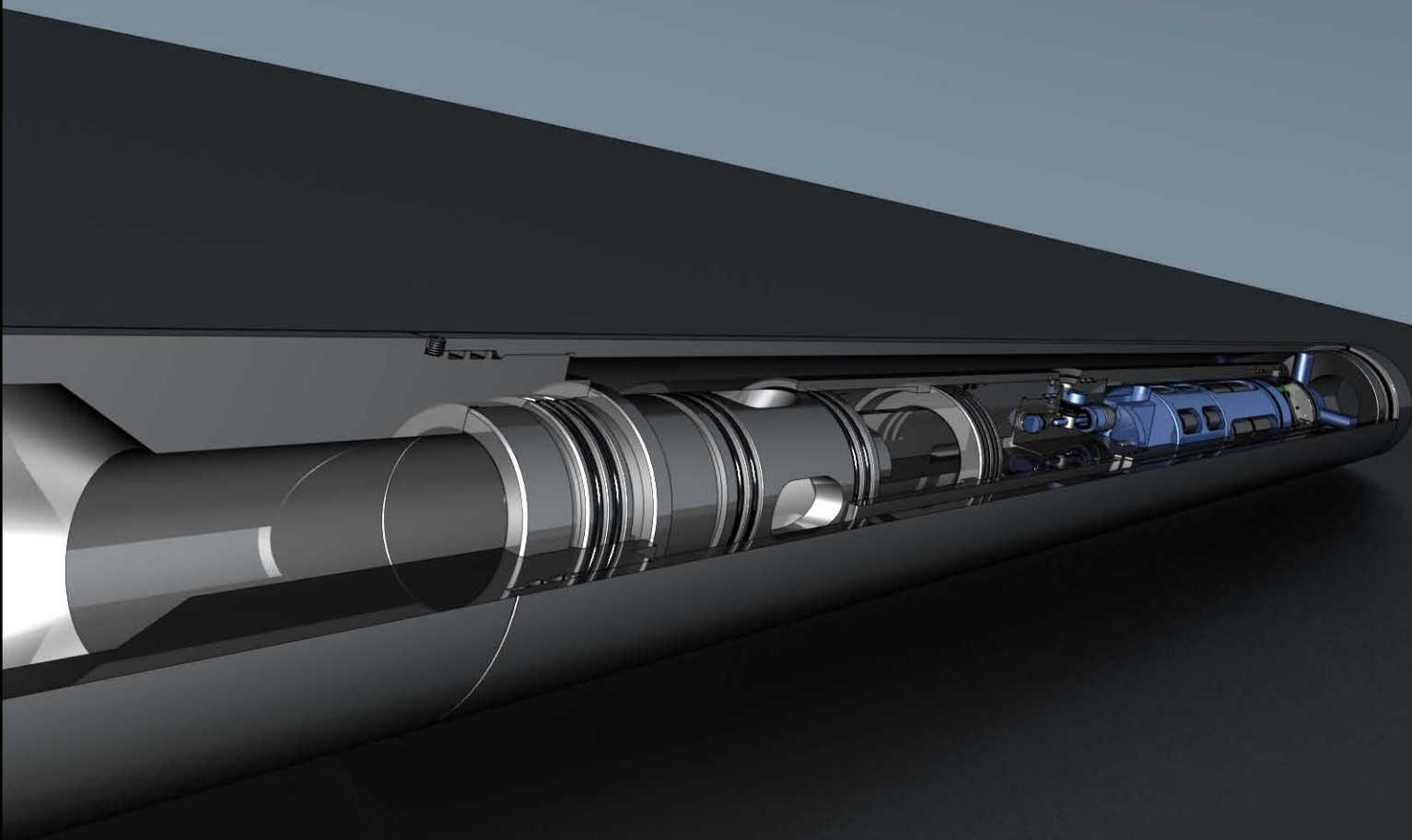


Omega Completion Technology Ltd.

Technical Specifications: Electronic Liner Shoe (ELS)

Technical Specifications		
Tool Size	4.500"	5.500"
Top Connection	4-1/2" Premium Box Thread Up	5-1/2" Premium Box Thread Up
Material	13% cr or AISI 4140 18-22Rc	13% cr or AISI 4140 18-22Rc
OD	4.950" max	6.014" max
Length	86.0"	84.0"
Maximum Flow Area	4.15 in ²	4.15 in ²
Working Pressure Rating	5,000 psi *	5,000 psi *
Tensile Rating	246,000 lbs	397,000 lbs
Temp Rating	125 deg C	125 deg C
Operating Parameters	Pressure / Time / Pressure+Time	Pressure / Time / Pressure+Time

* 7,000 psi version is available on request.
Other sizes and materials available on request.



REV 009 : 17/02/11